

Welcome from

Beacon
Community
Services

Art on the Vine

***A Special Auction for the
Sluggett House
Dementia Care Facility***

Making the House a Home

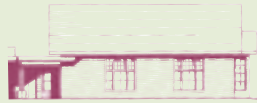
**June 21, 2007
Chalet Estate Winery, Deep Cove**

Dear Auction Guests -

On behalf of Beacon Community Services and the future residents of the Sluggett House dementia care facility (occupany summer 2008 in Brentwood Bay), thank you for attending our special auction.

Through your involvement this evening, we will be able to "make the house a home," providing special decor furnishings to help the seniors and their visitors feel comfortable in warm, familiar surroundings.

We hope you enjoy Art on the Vine and please know how much your support is appreciated.



Chair, Board of Directors - Beacon Community Services

*Our sincerest thanks to the Sluggett family and
Sluggett Memorial Baptist Church for your generous
donation of the land to make Sluggett House possible.*

Art on the Vine

The auction evening

- 6:45pm - Check in to receive auction package
 - Visit silent auction tables
 - Enjoy musical entertainment by Mark Bracken
- 7:20 Welcome & introductions
- 7:30 Silent auctions continue
- 8:10 Live auction begins
- 9:15 Closing remarks

The auctions

We hope you enjoy this evening's silent and live auctions. There are wonderful business packages and art pieces to choose from, all in support of making the new Sluggett House dementia care facility a home.

The following guidelines will answer some of your questions. Please feel free to ask the table attendants for further information.

- The Auctioneer controls and has final discretion over all auction activities.
- Write/show your assigned bid card number to make a bid. The bid cards are available at the check-in table.
- Items with a reserved bid will not be sold if that bid level is not obtained.
- Successful bidders please leave item(s) in place until the end of the evening.
- All sales are final. Items are sold “as is and where is” without warranty or guarantee.
- There are no refunds, returns or exchanges.
- Certificates must be used within one year or by the terms noted by the business.
- Items may be subject to reservations, blackout periods and availability.
- Payment must be made in full at the conclusion of the evening. The sales desk staff will present you with a tally of your purchases when you check out.
- Payment is accepted by credit card or cheque to “*Beacon Community Services*”.
- For any item sold for an amount over its market value, the purchaser will be mailed a tax receipt for the difference.

Thank you to Auctioneer Scott Melville

Melville Auction Group

Professional Benefit and Fundraising Auction Specialists

We put the FUN in Fundraising

www.melvilleauctiongroup.com
250-857-1015

Live auction

L-1 Pamper That Special Someone

For that special woman in your life, pamper her with:

- A massage treatment from the award-winning Ocean Palm Spa
- A facial, 2 manicures, a pedicure and a hair styling from Glo Salon, Jules Esthetics and Pharmasave Just for You Esthetics
- Bath delights from Saltspring Lavendar Co. and Pharmasave
- A beautiful orchid plant from Brown's The Florist



L-2 “Blue Fish Group” metal wall plaque

by Lynn Laughren

Metal work artist Lynn Laughren works from scrap and recycled steel. For the “Blue Fish Group”, she has hand-drawn and cut each piece of mild steel, fused them together and painted the metal in vibrant colours - sure to be a focal point of any room or patio.



L-3 “Market Day” acrylic by Kay Davies



Kay Davies works in watercolour, collage, India ink and acrylics. To her, painting is “a joyful time which she wants to express in a way that others will feel it too.” Kay loves to let the paint flow, allowing the paint to direct the subject matter of the piece. Much of her work is semi-abstract, most in vibrant warm colours, as shown in her eye-catching “Market Day” acrylic.

L-4 Dining Around the World...on the Peninsula

Enjoy international cuisine right here on the Peninsula, with this package of fine restaurants to tantalize your taste buds, and give you eight nights out on the town:

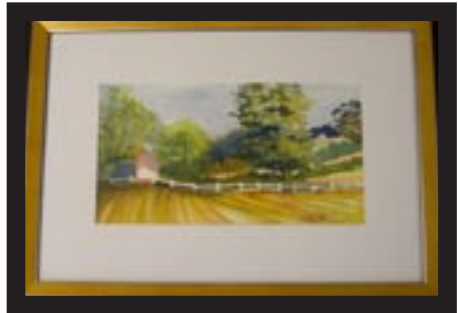
- Bistro Suisse – Swiss
- Blues Bayou – Cajun
- Fish on Fifth – Westcoast seafood
- Piccolo – Greek
- Sabhai Thai – Thai
- Sidecar Café – British
- Taste of Tokyo – Japanese
- The Latch – Italian



L-5 “A North Saanich Farm” watercolour

by F. Caroline Hunter

Caroline Hunter paints for the joy of it, being drawn to all forms of nature in our beautiful British Columbia. She is intrigued by those resting moments, the tranquil spaces between activities. “A North Saanich Farm” share this peaceful calm, painted in a field at Glamorgan Farm, North Saanich.



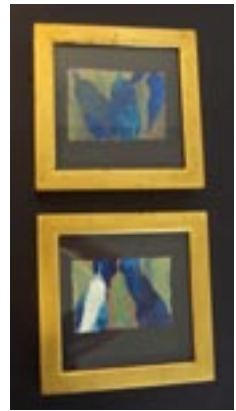
L-6 Pier Paradise

The Peninsula’s newest boutique hotel and spa is now open and ready to spoil a lucky couple. Enjoy an overnight seaside escape, relaxing in your elegant deluxe oceanside suite, getting pampered in Haven Spa’s rejuvenating sanctuary, and indulging in a full gourmet breakfast at Haro’s Waterfront Restaurant. Sure to be a unique stay in our own Peninsula paradise.



L-7 “A Few Pears” monotype - set of 2
by Jennifer Robins

Jennifer explains, “It’s the magnificent textures intense darks, and translucent light found in the print making process that keep me engaged with this art medium.” “A Few Pears” are spontaneous monotypes she produced using various processes - with stunning, unique results.



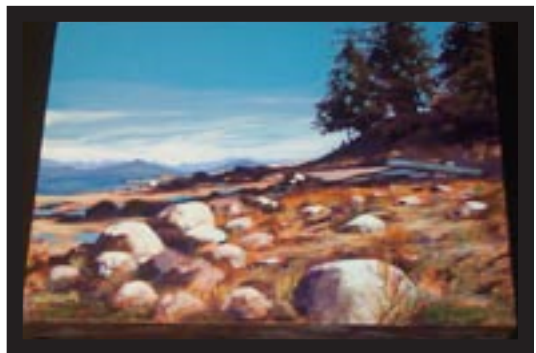
L-8 Making Your House a Home



Thank you for helping make Sluggett House a home tonight. This item let's you focus on *your* home. Saanichton's Home Décor and More store is helping you furnish a room with this gorgeous custom-made slipper chair and throw cushion by Vancouver's Van Gough Designs (companion pieces for this “Suncity Shore” pattern are available). This chair will bring style and spark to any room.

L-9 “Solitude” acrylic by F. Caroline Hunter

Victoria artist Caroline Hunter has a passion for rocks, and is captivated by the strong lights and shadows around her. “The light on the lovely west coast is in constant motion,” comments Caroline. She has captured this so well in the beautiful “Solitude” beach scene.



L-10 “Small Sea Turtle” bronze sculpture

by Paul Harder

Paul Harder is a Fisheries Biologist who gets inspiration for his highly detailed bronze sculptures from his diving experiences. Only a small edition run of this sea turtle sculpture has been produced, with the original mold then destroyed. The coral and rock base for the sea turtle is hand-built and unique to this eye-catching bronze art for your home or garden.



L-11 “Orcas Swimming By the Light of the Moon”

brooch/pendant by Terry Venables



This one-of-a-kind jewelry piece was inspired by goldsmith Terry Venables observing the whales frolicking in the Strait of Juan de Fuca while salmon fishing. It is handmade of 14K/22K gold, with small diamonds used for the eyes to “reflect the magic of their souls.” The whales are guided by a beautiful moonstone.

L-12 “Peonies” encaustic art

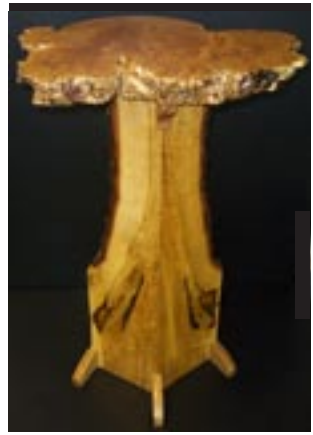
by Lois Moore

Brentwood Bay’s Lois Moore is an award-winning, versatile artist now immersed full-time in encaustic art after training in San Francisco. Encaustic is Greek for “burn in”, with this art form dating back 2,000 years. Lois comments, “Working with encaustic requires a quickness and willingness to both predetermine and create images as they happen.” For “Peonies”, beeswax was used with damar resin and pigment, then applied on a wood board with heat from various tools to produce magnificent luminous colours and dramatic textural effects.



L-13 “Still Standing” burl table
by Daniel Ouimet

A third-generation craftsman, Daniel Ouimet creates sculptured organic furniture from his Brentwood Bay studio. Daniel shares, “trees never die. They metamorphose and share our journey.” He uses reclaimed wood, drawing inspiration for a furniture’s features from the natural shape and line of the wood. “Still Standing” is a stunning table made from maple burl and garry oak, undoubtedly a focal point of any room.



L-14 Vancouver Fly Away



Take an exciting escape to Vancouver with a return trip for two on Harbour Air Seaplanes. Stay overnight in a deluxe suite at the River Rock Casino Resort in Richmond (near the Pat Bay base’s terminus at Vancouver Airport). Enjoy the resort’s myriad of amenities including the exciting casino, 950-seat show theatre, nine restaurants and bars, tropical swimming pool and tranquil spa. You won’t want to return home!

L-15 “Here on Golden Pond” mixed media acrylic collage
by Rose Davidson

Rose Davidson is a talented mixed media artist working primarily in acrylics and collage. For this collage painting, Rose brought the heron and feathers to life by layering pieces of a wasp nest onto its body - the result is breathtaking.



L-16 Island Hopping Luxury Escape

Poets Cove
RESORT & SPA

Get away to South Pender Island on a Poets Cruise round trip water taxi from the Port Sidney Marina. Destination: Poets Cove Resort and Spa, the jewel of the Gulf Islands. Enjoy a two-night stay for two in a luxurious ocean view Lodge Room with private deck, gas fireplace and soaker tub. Take in the many nearby island activities, or simply relax and enjoy the resort's Surussus Spa and other first-class amenities!



L-17 “Morning Glow” acrylic by Paul Alex Bennett



Artist Paul Alex Bennett's work is aimed at making a strong impression of a particular place at a particular moment in time. He wants viewers to feel as if they are a part of his subject. Paul explains, "I hope anyone looking at a finished painting of mine experiences some of the joy I had while creating it." He has certainly achieved this with "Morning Glory."

L-18 “Golden Raku” pottery vessel by Mary Fox

Perfect form, exquisite balance, and a sense of contained movement are hallmarks of Ladysmith potter Mary Fox's work. She reflects, "Creating beautiful vessels for people to use or contemplate is a thoroughly enjoyable way to spend one's life. I have been a potter since I was 13 and still look forward to entering my studio everyday full of energy and inspiration to create anew." Mary's "Golden Raku" vessel captures effects not normally associated with raku, with beautiful results.



L-19 Tea with Ted

Spend a special afternoon over tea with renowned artist Ted Harrison, take home a framed print and a special experience.

Ted's distinctive painting style, which illustrates his love of the land and the people of the Yukon, has brought him national acclaim. This 80 year-old artist from Wingate, Britain is also an internationally recognized author of children's books and has spent much of his career teaching art to children of all ages. In 1987 he received the Order of Canada for his contribution to Canadian culture.



Two auction guests will have much to talk about as you visit with Ted in his Oak Bay gallery and go for a full afternoon tea at the special White Heather Tea Room. The value of this package - priceless!

L-20 “Reflections” fused glass sculpture, aluminum base by Pauline Olesen



Pauline has an unending curiosity and passion for the fused glass medium. Multiple firings in the kiln are often required to bring a piece to completion, as was required of “Reflections”, a stunning piece inspired by architect Frank Gehry.

Of her work Pauline says, “Half the fun is trying new things, having an idea and figuring out how to make it work with glass. The challenge of trying and the end results are always satisfying to me. I love the look of glass, the play of light, the reflection when the sun comes shining through - that moment of beauty, a treasure, a gift, a smile.”

A special thank you

To our event sponsors



PENINSULA NEWS
REVIEW

SEAFIRST
INSURANCE BROKERS

To businesses generously contributing to the auction

Ardmore Golf Course	Panorama Recreation
Art Knapp Garden Centre	Pharmasave Just For You
Beacon Landing Bar and Grill	Esthetics Studio
Bistro Suisse	Piccolo Restaurant
Blues Bayou	Poets Cove Resort
Brentwood Bay Lodge and Spa	Poets Cruise
Brown's The Florist	River Rock Casino Hotel
Butchart Gardens	Ron Stacey Art Studio
Captains on the Waterfront	Russell Nursery
Chalet Estate Winery	Sabhai Thai Restaurant
Fish on Fifth	Safeway
Four Seasons Garden Centre	Saltspring Lavender Company
Glen Meadows Golf & Country Club	Seahorses Café
Glo Salon	Sea Quest Adventures
Harbour Air Seaplanes	Side Car Café
Home Décor & More	Sidney Pier Hotel and Spa
Island Art	Star Cinema
Island View Golf Centre	Starbucks Coffee
Jules Esthetics	Susan Mason Interior Design
Marigold Nurseries	Taste of Toyko
Mark's Work Warehouse	Ted Harrison Gallery
Mary Winspear Centre	The Gallery
Ocean Palm Spa	The Latch Restaurant
Opus Framing and Art Supplies	White Heather Tea Room

and to ...

Our talented auction artists

Susan Abbey	656-1149	
Phyllis Albone	658-2316	philandtrev@shaw.ca
Chris Aler	380-1663	calers@shaw.ca
Tine Andriessen	655-3760	www.tine.ca
Ed Araquel	391-1241	edaraquel@shaw.ca
Paul Alex Bennett	658-3181	www.paulbennett-art.net
Heather Corbitt	656-1324	corbitt@shaw.ca
Phil Cottell	655-9190	cottells@shaw.ca
Duncan Currie	655-5099	pdcurrie@shaw.ca
Rose Davidson	652-4485	rose.davidson@shaw.ca
Kay Davies	382-9666	akdavies@shaw.ca
Peter Dawson		Tsawataineuk Nation www.needleart.com
Mary Fox	250-245-3778	mvp@islandnet.com
Andre Gogol	652-7187	www.andregogol.com
Brenda Grant	744-3353	ronuma@shaw.ca
Kathy Guthrie	370-2116	www.letteringart.ca
Tove H. Hansen	384-1988	tnhansen@shaw.ca
Paul Harder	656-7783	www.paulharder.com
F. Caroline Hunter	595-8658	fchunter@shaw.ca
Shelia Herbert	651-1466	herbsathome@pacificcoast.net
Judith Hirczy	477-0810	jhirczy@shaw.ca
Alan Hopper	598-3518	hoppera@shaw.ca
Tim Isaak	884-9270	http://members.shaw.ca/timisaak
Aurelia Jacobsen	544-1299	aurelijacobsen@shaw.ca
Lynn Laughren	479-5223	laughren@shaw.ca
Keith Levang	654-0426	keithlevang@shaw.ca
Kit McDonald	656-6603	bob-kit@shaw.ca
Lois Moore	652-2446	www.designsbylois.com
Sophia Morrison	744-1046	sitkastudios@shaw.ca
Marilyn Murray	652-4455	murraym36@shaw.ca
Joan Noble Johnston	656-9891	noblejoanis@shaw.ca
Pauline Olesen	655-4812	www.paulineolesen.com
Daniel Ouimet	652-0506	www.chanteclerwoodcraft.com
Janet Remmer	656-5824	jremmer@shaw.ca
Jennifer Robins	479-5759	jenoah@shaw.ca
Veronica Stewart	595-0701	www.artofthegoddess.com
Cliff Stright	818-0533	cwstright@gmail.com
Greg Swainson	656-3786	raintree@telus.net
Toshi Varma	477-0854	toshivarma@shaw.ca
Terry Venables	655-1491	goldsmith@shaw.ca
Grant Weiss	220-4639	gweiss@shaw.ca
Molly Whitelaw Reid	385-6714	mollywhitelawreid@shaw.ca
Fran Wood	477-3288	frannycrjv@hotmail.com
Glenys Marshall-Inman	250-642-5555	www.marshallinman.com